



PARK VIEW

VINAYAK ABHAYADATA

at Thornhill Road,
Prayagraj

A Project of
VINAYAK ABHAYADATA VENTURES LLP

Block A - D02 (3 BHK + Study Room)



This page is intentionally left blank



PARK VIEW

VINAYAK ABHAYADATA

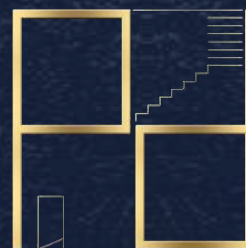
at Thornhill Road
Prayagraj

A Project of
VINAYAKABHAYADATA VENTURES LLP

Architect



Interior Designer



PRAVARSH DESIGNS

Landscape Designer



BIOS

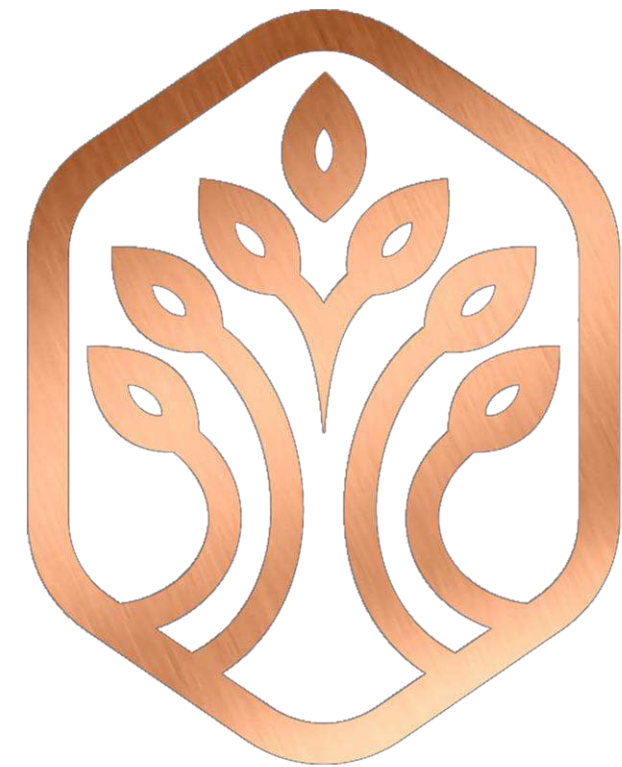
WELCOME TO PARK VIEW

HIGH END LUXURY LIVING

EPITOMIZING ELEGANCE & GRANDEUR BEYOND COMPARE

Park View aims to be a true oasis in every sense. Here, residents will experience all the modern facilities with majestic views of the Company Bagh / Chandrashekhar Azad Park in the South and lush green surrounding all around. A mesmerizing design that combines contemporary architecture where modern style blends with nature.

Get ready for a whole new way of life !





* Artistic impression may differ from actual

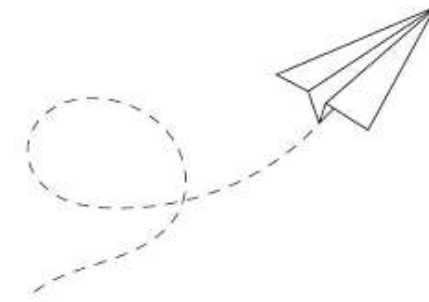


This page is intentionally left blank

TABLE OF CONTENTS



1. Project Location
2. Exterior Design
3. List of Amenities
4. Master Plan
5. Connectivity
6. Reception Entrance
7. Lift & Corridor Lobby
8. Interior Design of Block A (3 BHK + Study Room) flat
 - Living Room
 - Powder Washroom
 - Dining Area & Kitchen
 - Bedrooms with En – Suites & Balconies
 - Study Room
9. Specifications
10. Professional Team



REACH FOR THE STARS

HAVE A VISION THAT'S LARGER THAN LIFE

Located opposite to St. Mary's Convent School
Maharshi Dayanand Marg, Prayagraj

Come home to an aura of luxury you richly deserve. Soaring high in a premium locality, yet leaving the crowded bustle of urban living behind, Park View will pamper you with splendor and sophistication. It is reserved for those who believe life must be lived to the fullest.

In this haven of style and comfort, you will find that rare factor that best defines luxury :

The Sheer Abundance of Space !

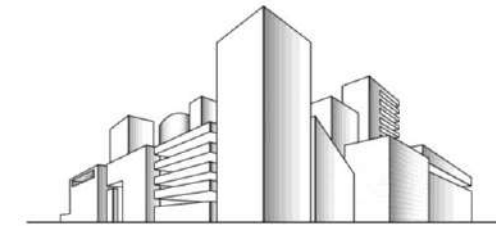


BLOCK A

* Artistic impression may differ from actual



MESMERIZING ARCHITECTURE



SURROUND YOURSELF WITH UTMOST ELEGANCE IN THE HEART OF PRAYAGRAJ

Park View brings forth the concept of integrated high-end facilities, thereby offering a luxury living environment in the heart of city center.

A project that has been designed with precise attention in detailing and maximum optimization for an extra-ordinary living experience. Upgrade your lifestyle and live a luxurious life in the heart of Prayagraj.

This project consist of two blocks :

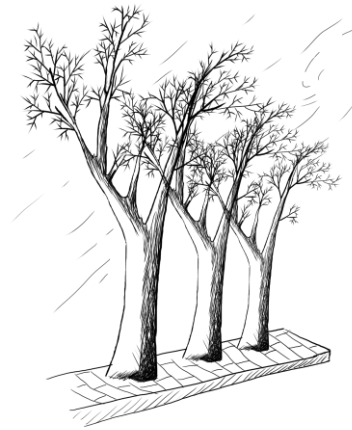
Block A with stilt parking + 5 floors, and

Block B has basement and stilt parking + 12 floors.

BLOCK B



* Artistic impression may differ from actual



LANDSCAPE DESIGN

A DEEP CONNECTION TO NATURE

Humans love nature, and our moods, health, and happiness are deeply impacted by it. Natural landscapes are incredibly diverse. Park View provides a huge canvas to integrate a variety of natural elements – greenscapes and waterscapes. You will find a vibrant mix of carefully-crafted greenery and water bodies.

Refresh your mind with a morning stroll through pristine landscaped gardens.





AMENITIES

MINGLE WITH THE STARS

Head up to the rooftop of BLOCK A and enjoy the incredible facilities available like :

- SKY POOL with a deck and changing room
- Indoor Party Hall
- Gym overlooking the sky pool with locker facility.
- Steam cubicle
- Activity room which can have facilities like Snooker, Table Tennis, Chess and Carrom
- Sitting Lounge
- Structured garden with walking pathway
- Hassle-free planned parking space for your premium cars

- 24x7 Security
- Landscape Garden
- Lift(s)
- Car Parking
- Gyms
- Swimming Pool
- Club

& many more...



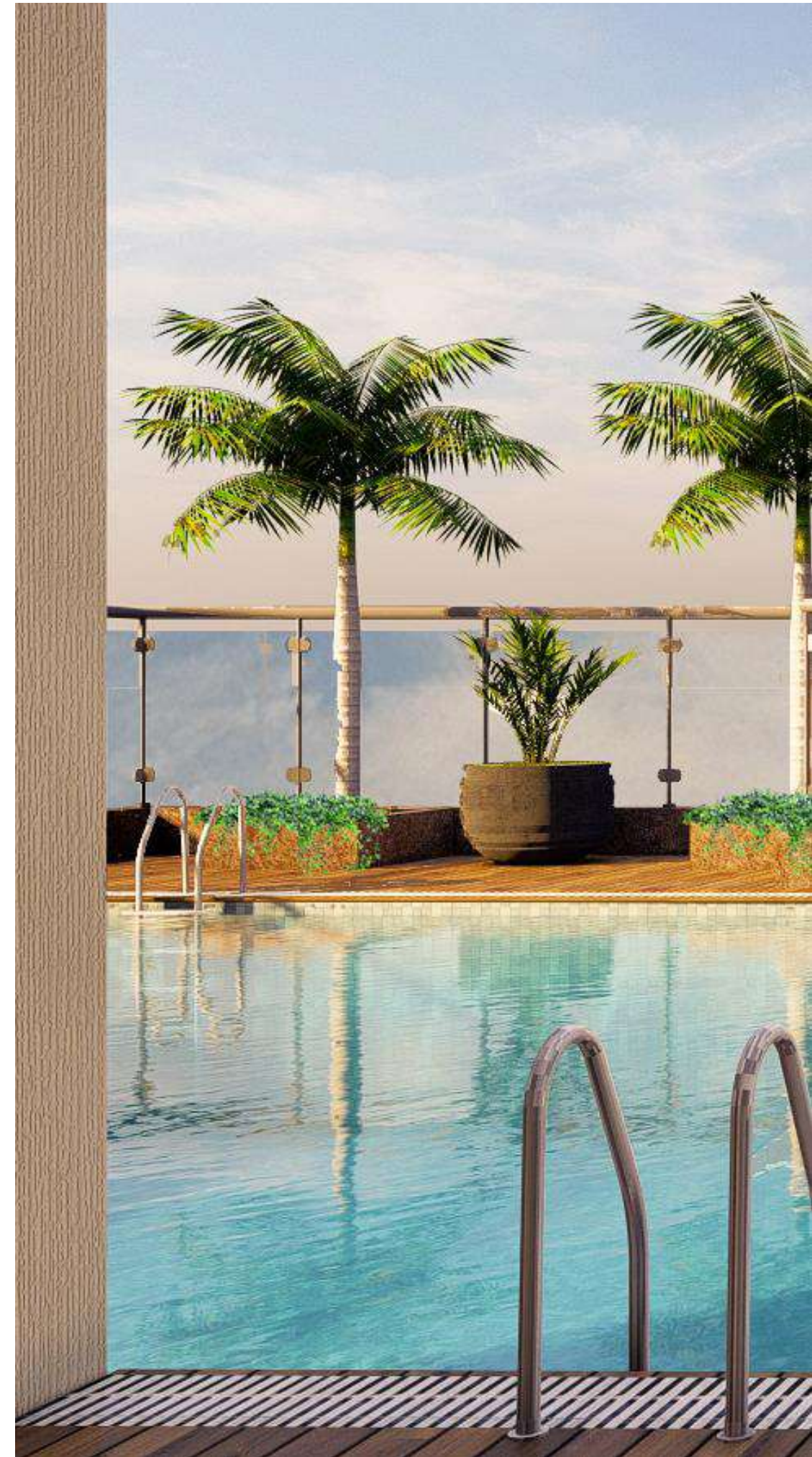
* Artistic impression may differ from actual

SKY POOL

BLOCK B - TERRACE

Swimming is a great recreational activity for people of all ages. It is a good way to relax and feel good.

Park View provides high – quality swimming pool to homeowners who loves soaking under the sky. This rooftop pool experience is one of a kind in Prayagraj and it simply adds an edge to the project making it a luxury residential project.

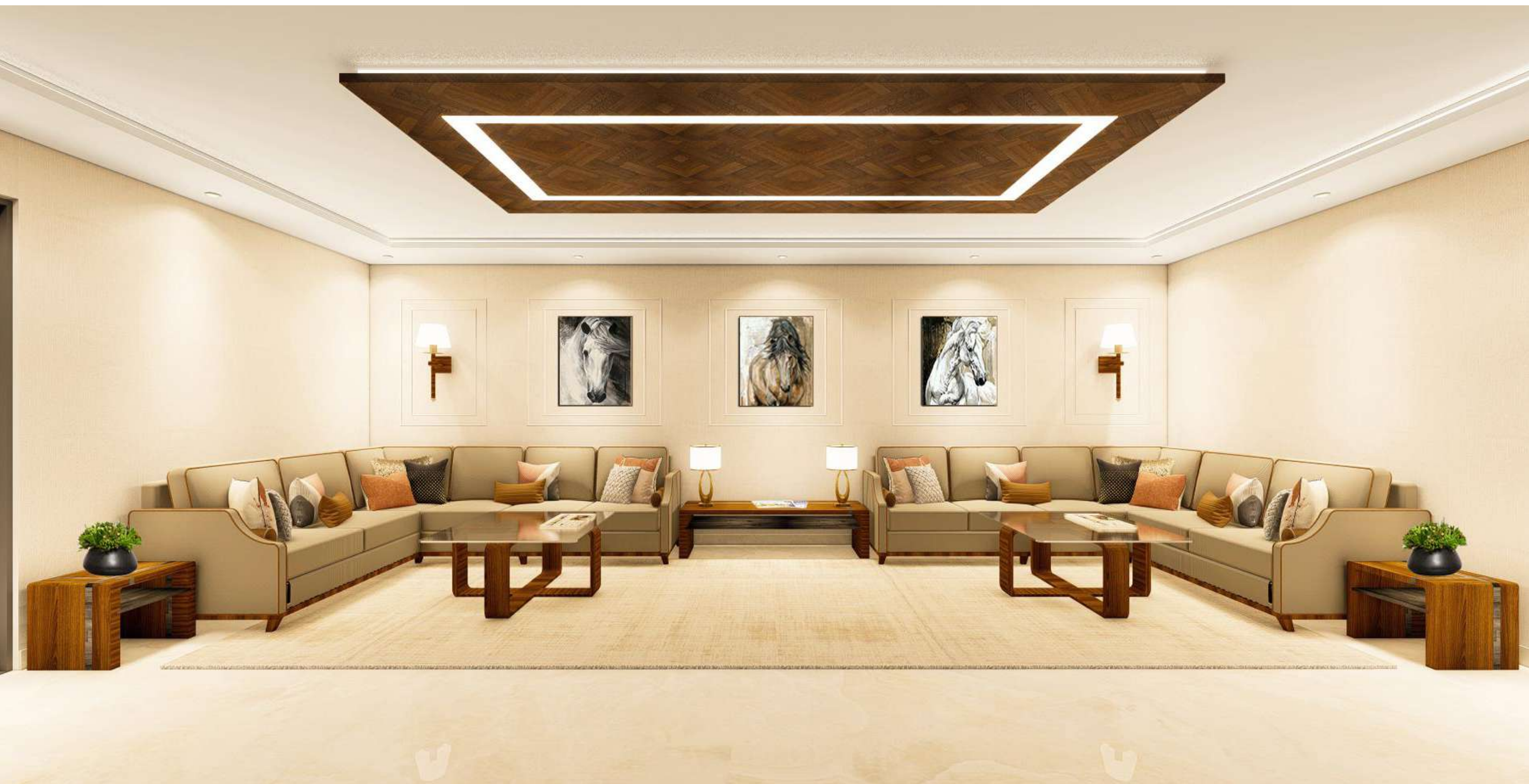




COMMUNITY HALL



LUXURY SITTING LOUNGE



GYM & YOGA

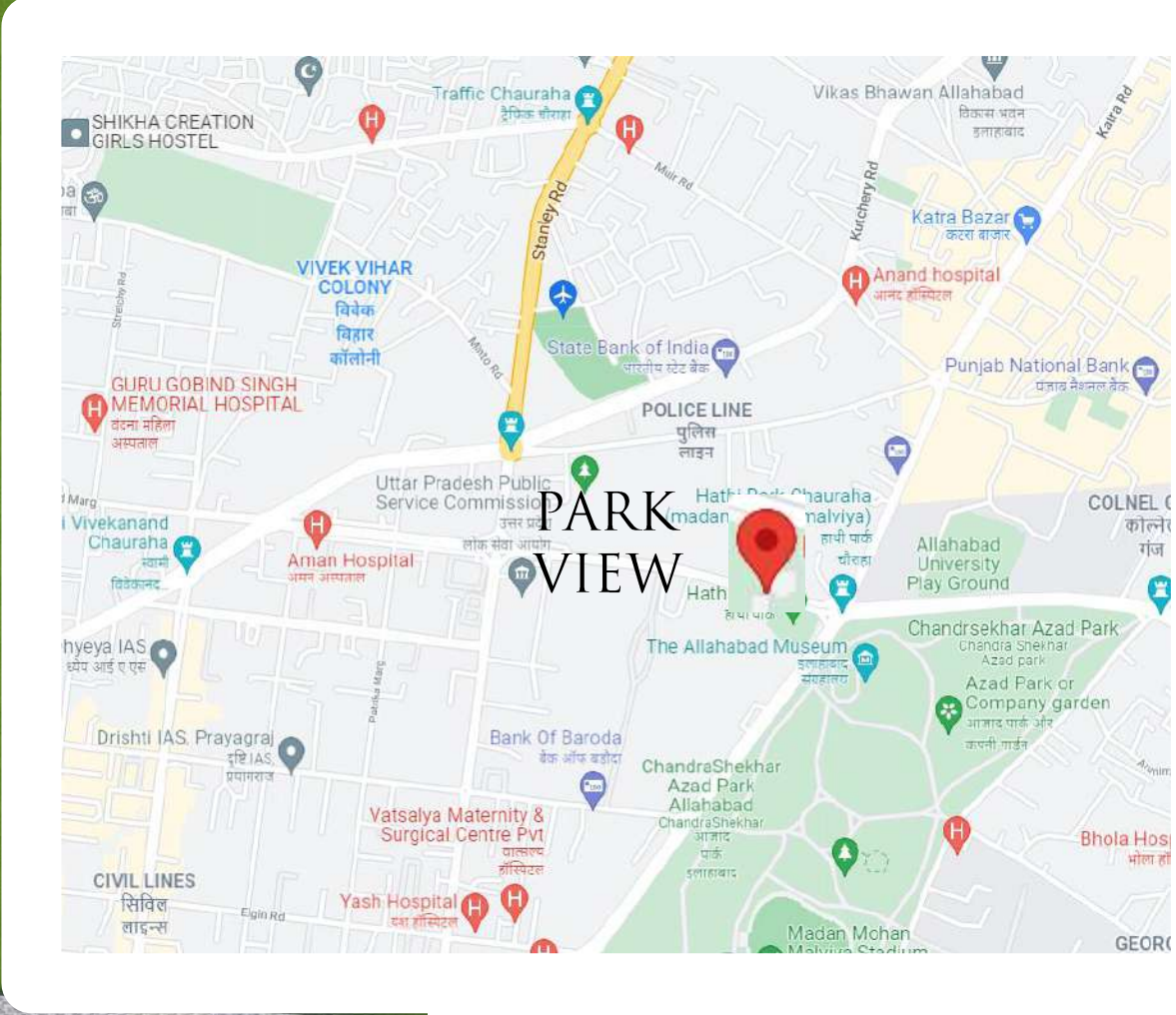


ACTIVITY ROOM





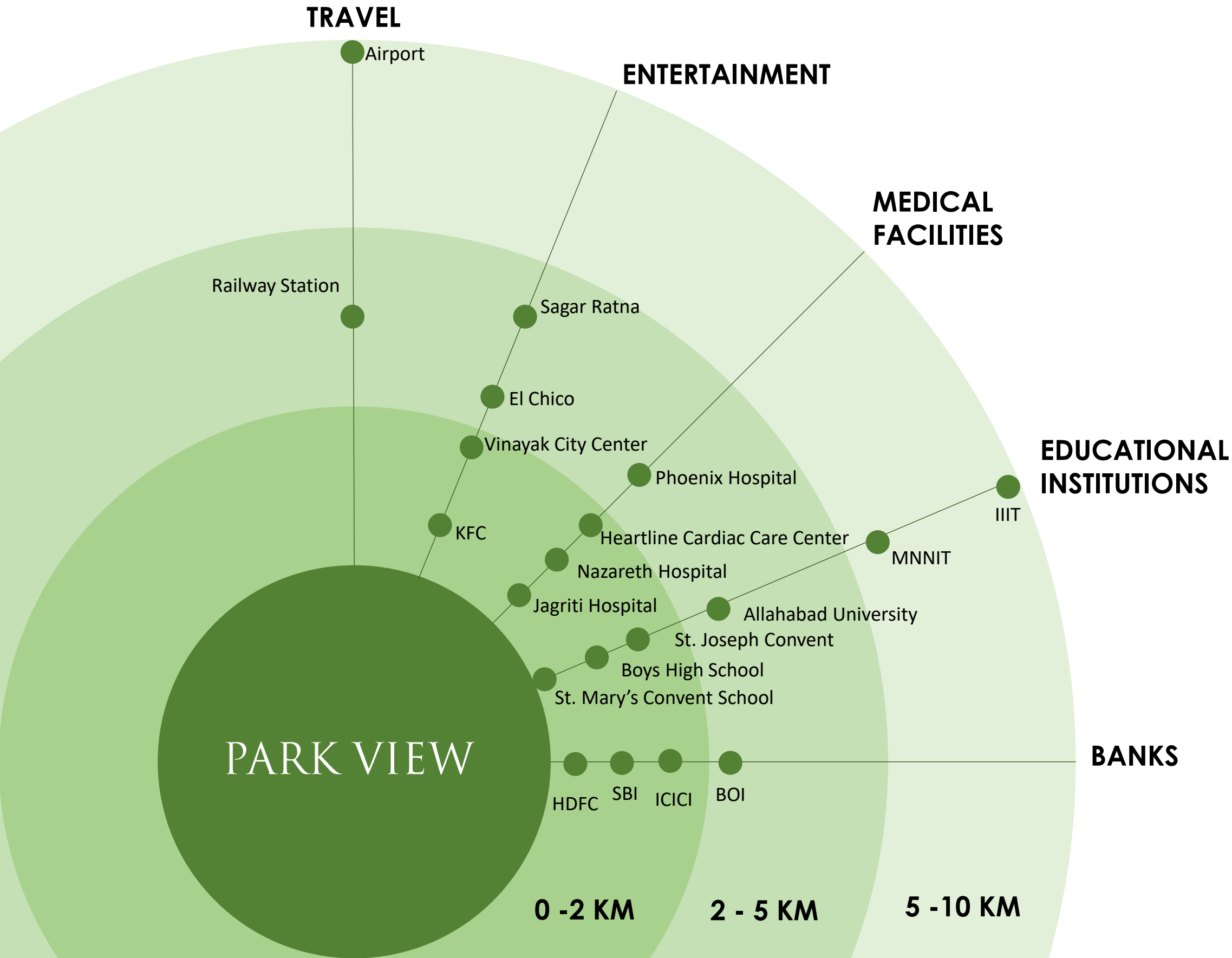
MASTER PLAN BLOCK A & BLOCK B



CONNECTIVITY

RESIDE IN THE HEART OF CITY

The sense of serenity makes this location the perfect place to call your own.





BLOCK A : D-02 (3 BHK + STUDY ROOM)

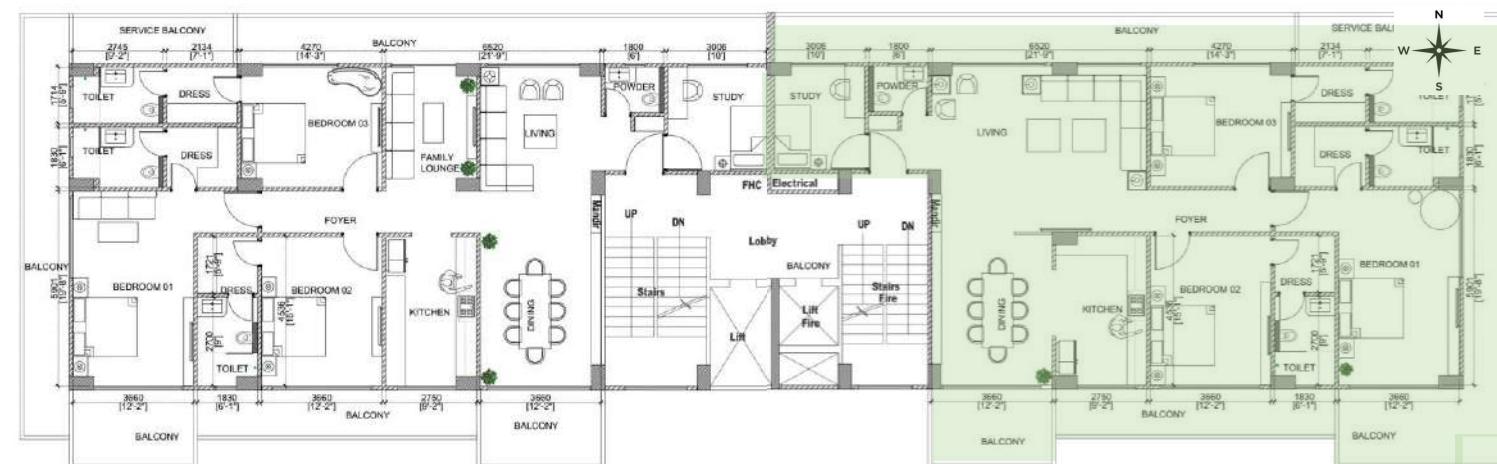
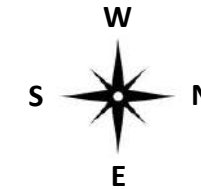
BUILT UP AREA = 2805.61 SQ.FT.

CARPET AREA = 1745.69 SQ.FT.

Park View offers a 3 BHK flat with a study room in Block A : D-02 .

Areas included :

- Spacious Living Room
- Dining Area & Kitchen
- 3 Bedrooms with En-Suite
- Study Room
- Powder Washroom
- Service & other Balconies



TYPICAL FLOOR PLAN



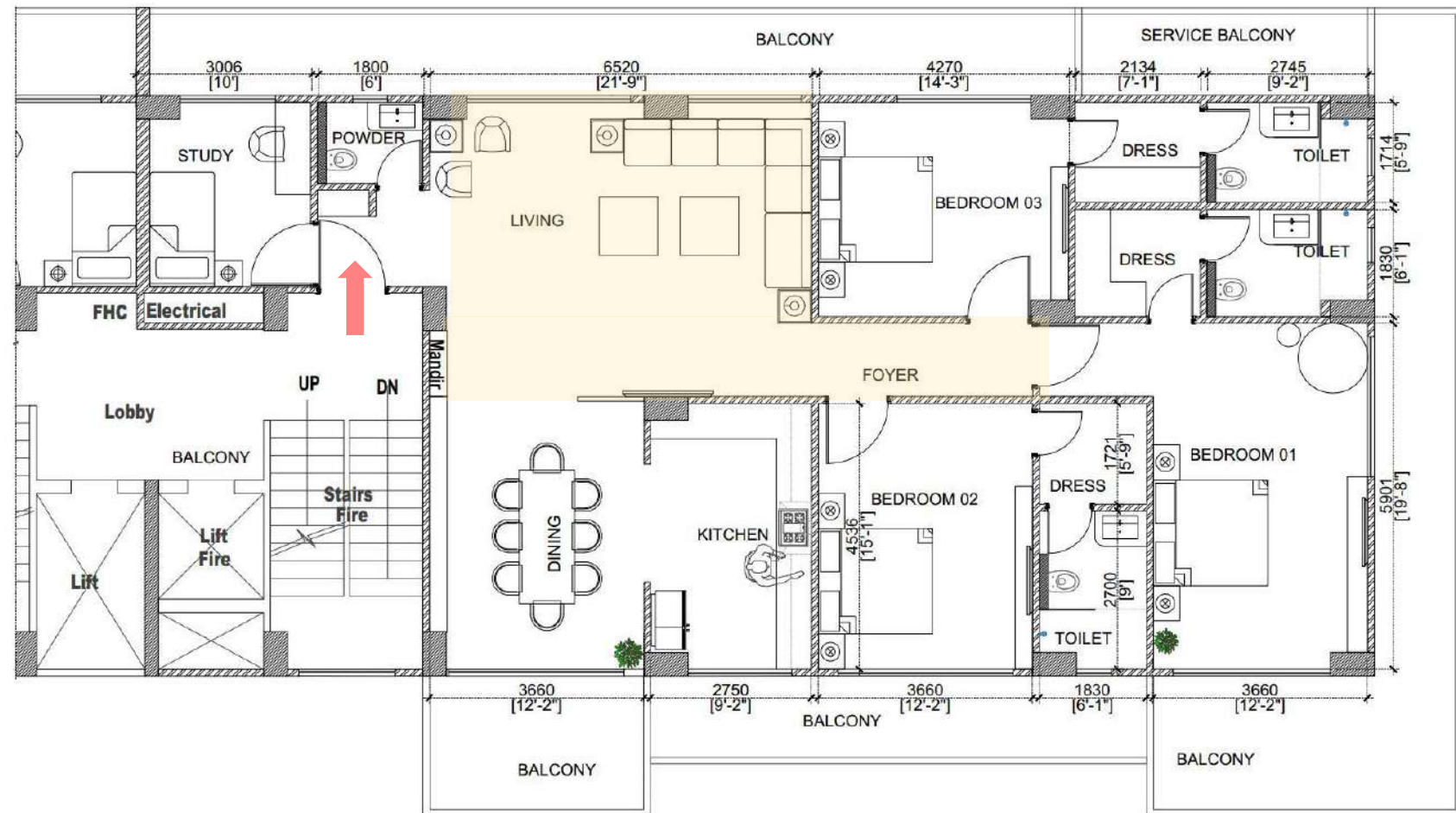
BLOCK A : D-02



LIVING ROOM

BALCONY SIDE
(21'9" X 16'9")

- There are series of efficient space planning techniques utilized to carve out meaningful representation of the space that you see around.
- Wide glazing brings maximum daylight and ventilation
- Light up the sky, or at least your living room, with an eye-catching modern chandelier.





D-02 | BLOCK A | PARK VIEW

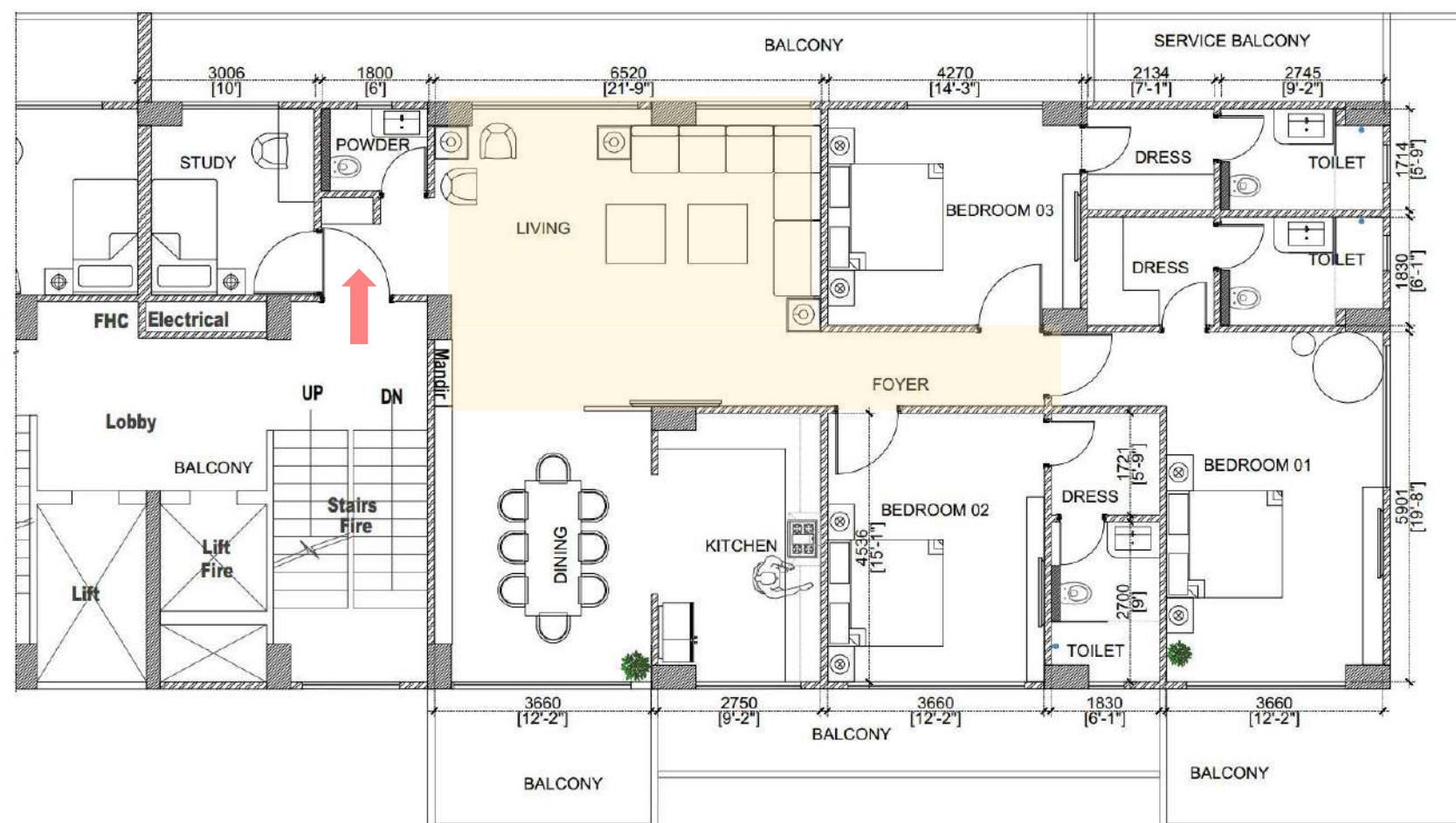
* Artistic impression may differ from actual



LIVING ROOM

TV PANEL SIDE
(21'9" X 16'9")

- Adequate planning of space to have wide screen television, home theatre, music system and recessed wall niches to add the aesthetic appeal of your interiors.
- The luxurious contemporary space is designed to exceed your expectations.



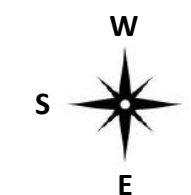
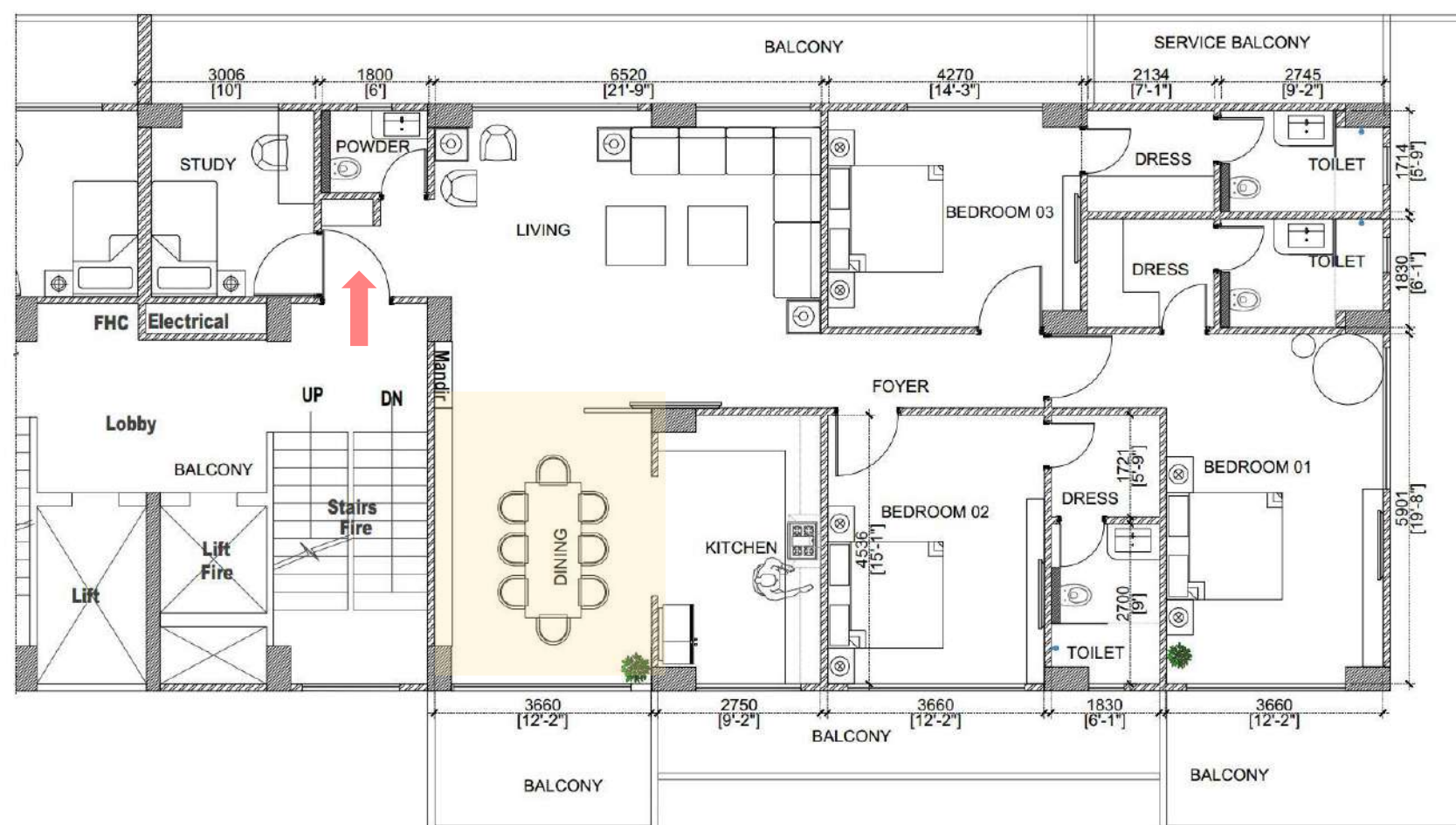


D-02 | BLOCK A | PARK VIEW



DINING AREA (12'2" X 15'1")

- Your home's dining area is the key to great getting-together moments.
- It can be designed to show combination of different materials, patterns, and colours, that will come out together perfectly.
- Enjoy an intimate gathering with family and friends.





D-02 | BLOCK A | PARK VIEW

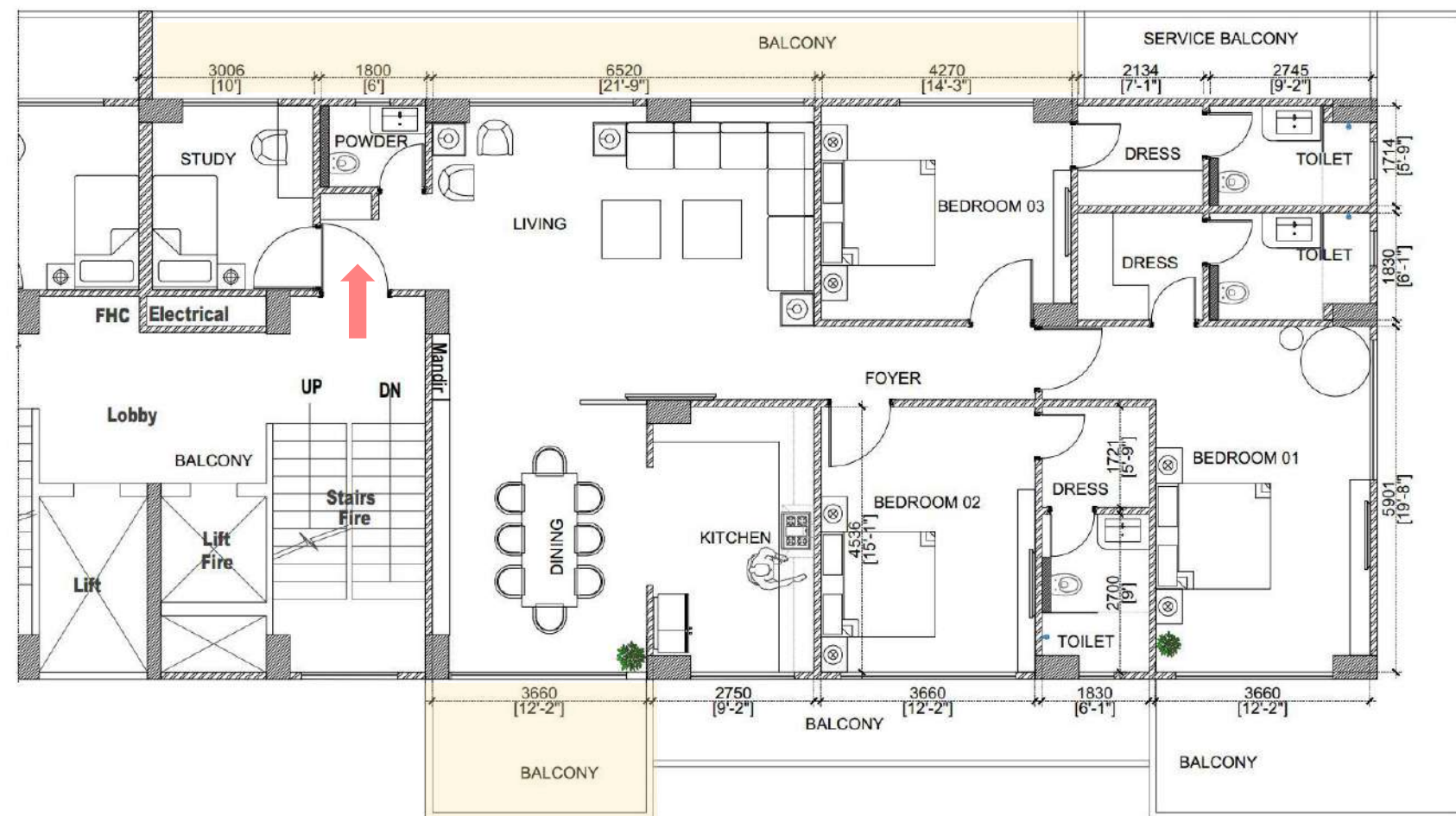
* Artistic impression may differ from actual



BALCONY CONNECTED WITH LIVING ROOM (52' X 4'7")

BALCONY CONNECTED WITH DINING ROOM (12'2" X 7'7")

- Step outside on your balcony and take advantage of that extra outdoor space.
- It is a great place to zap stress, be creative, and enjoy good time with family and friends.
- Spacious balcony can give you the perfect opportunity to practice basic yoga or sit and meditate to relax your body and mind.





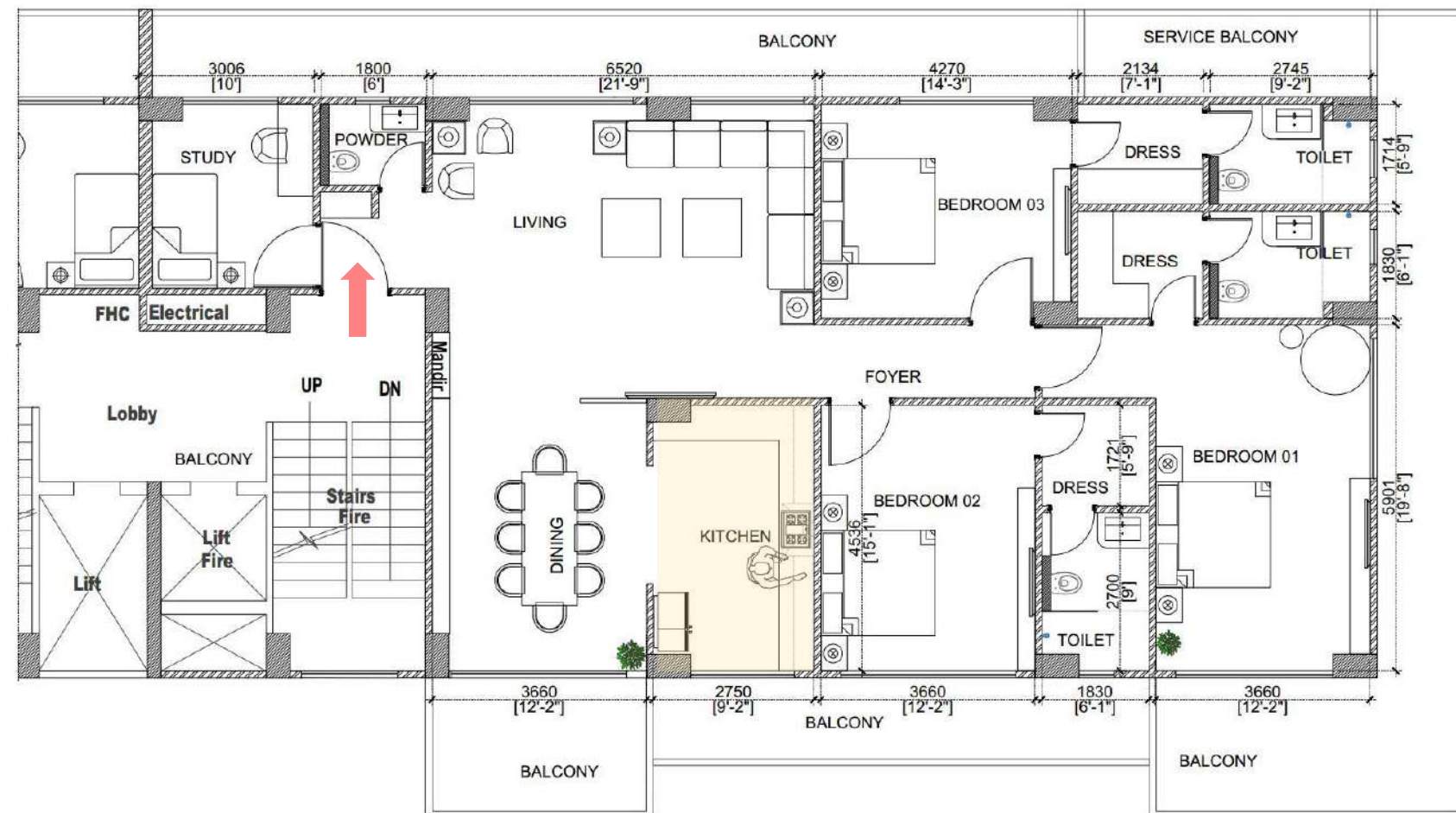
D-02 | BLOCK A | PARK VIEW

* Artistic impression may differ from actual



SPACIOUS KITCHEN (9'2" X 15'1")

- The kitchens aren't just a place to prepare, cook and store food - they are the heart of your home.
- It is equipped with state-of-the-art craftsman-made modular units from Godrej Interio or equivalent.
- Every detail is minutely thought upon while designing the kitchen including a chimney, tall unit for your appliances, sink and a basin double tap mixer.





D-02 | BLOCK A | PARK VIEW

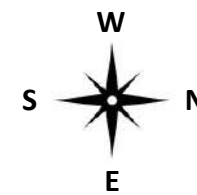
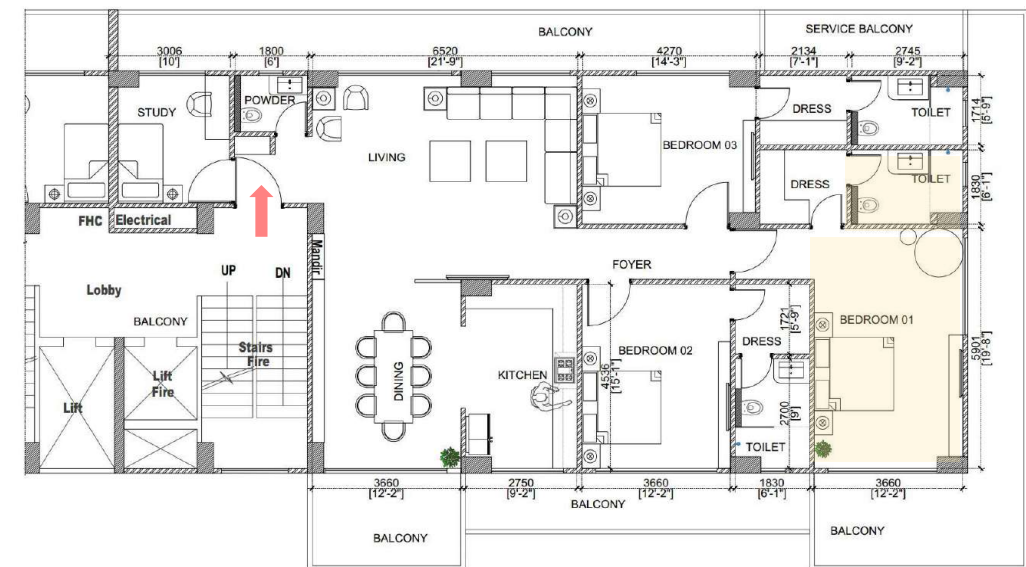
* Artistic impression may differ from actual



MASTER BEDROOM 01
(12'2" X 19'8")

DRESS 01
(7'1" X 6'1")

WASHROOM 01
(9'2" X 6'1")



D-02 | BLOCK A | PARK VIEW

* Artistic impression may differ from actual



D-02 | BLOCK A | PARK VIEW

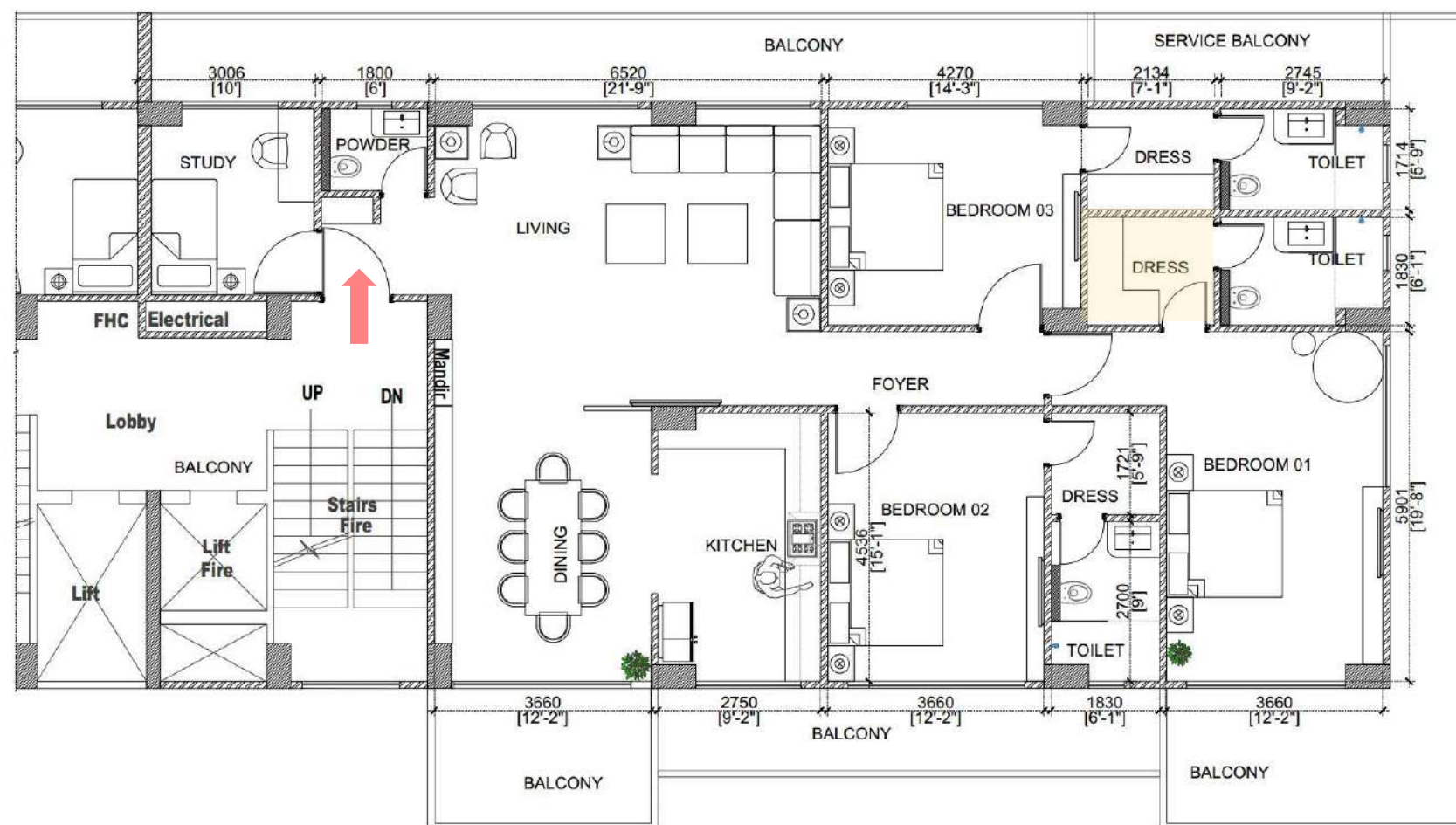
* Artistic impression may differ from actual



DRESSING IN MASTER BEDROOM

(7'1" X 6'1")

- All bedrooms comes with an indulgent En-suite.
- Sophisticated colour palette and sensitively selected materials and fittings combine to create a serene and relaxing oasis of calm.
- Park View's luxury designer dressing have got every base covered.





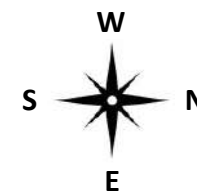
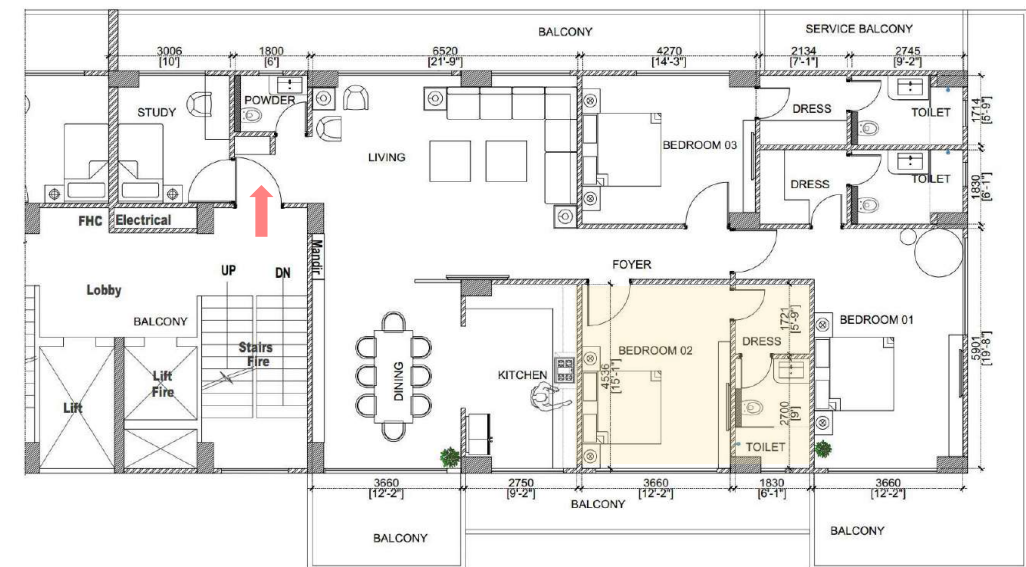
D-02 | BLOCK A | PARK VIEW



BEDROOM 02
(12'2" X 15'1")

DRESS 02
(6'1" X 5'9")

WASHROOM 02
(6'1" X 9')



D-02 | BLOCK A | PARK VIEW

* Artistic impression may differ from actual



D-02 | BLOCK A | PARK VIEW

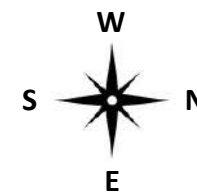
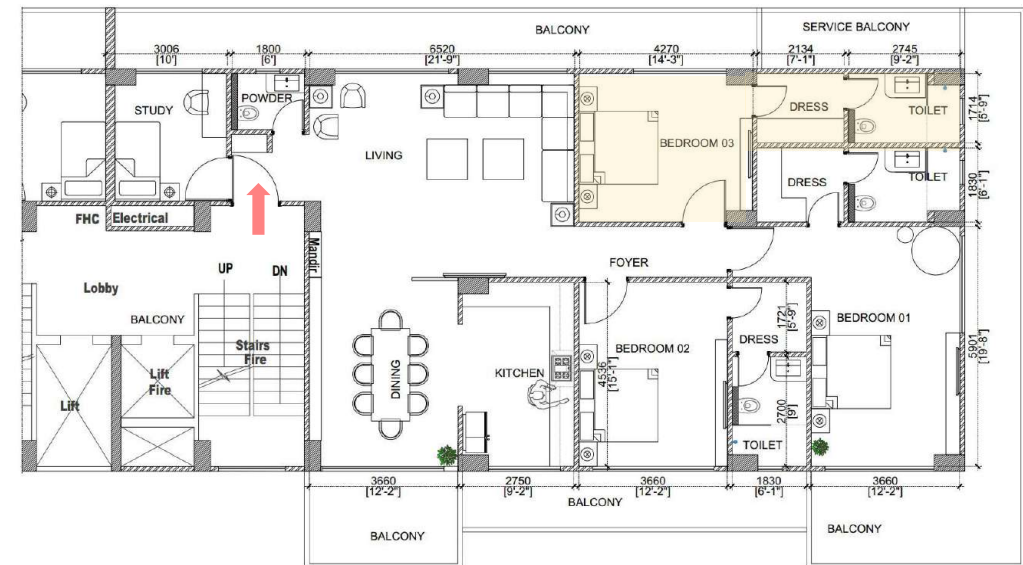
* Artistic impression may differ from actual



MASTER BEDROOM 03
(14'3" X 12'2")

DRESS 03
(7'1" X 5'9")

WASHROOM 03
(9'2" X 5'9")



D-02 | BLOCK A | PARK VIEW



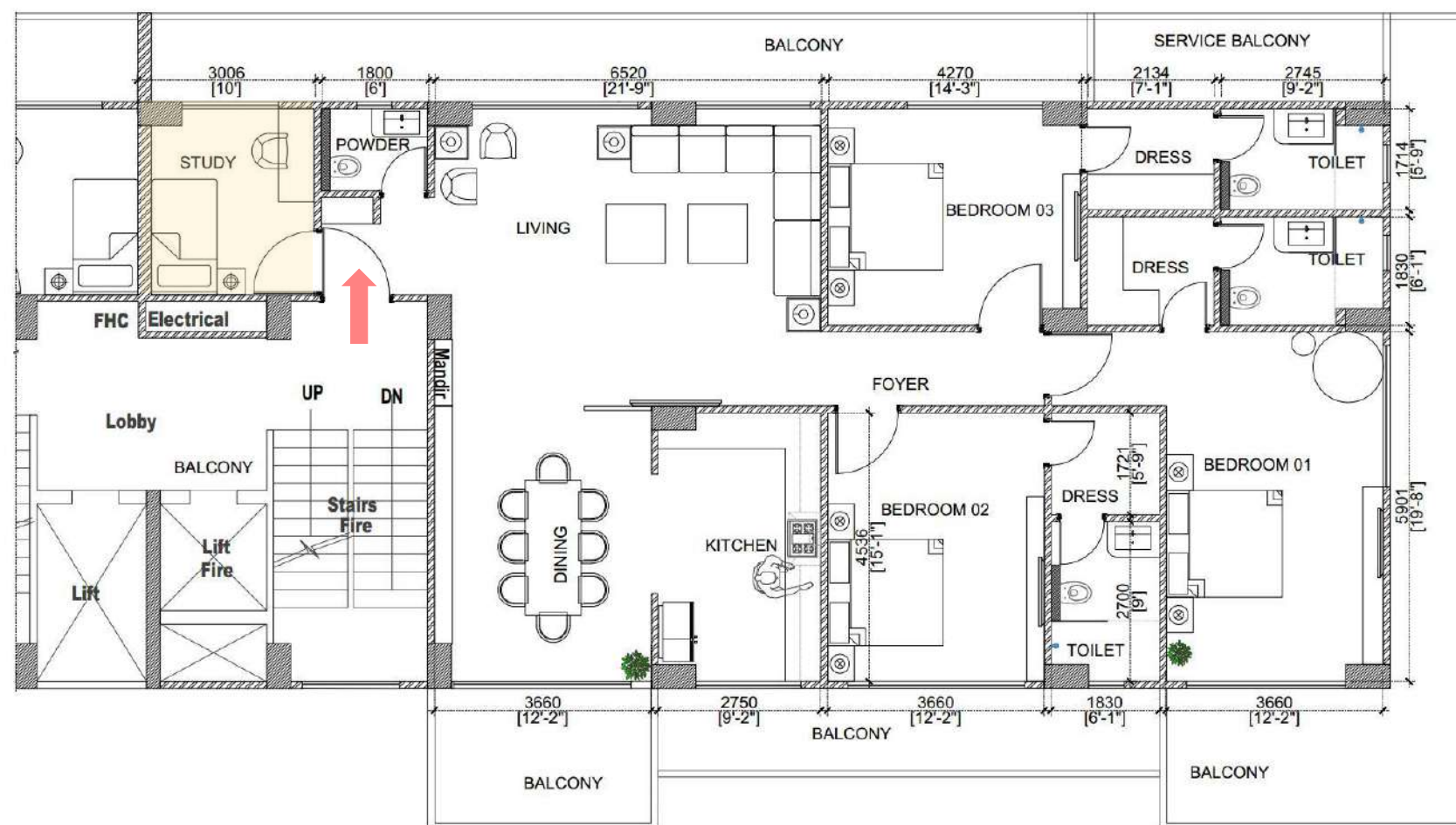
D-02 | BLOCK A | PARK VIEW



STUDY ROOM

(10' X 10'6")

- Everyone has to bring work home with them at some time and getting a dedicated spot for home office adds extra edge to your home.
- Even the kids need an area to sit and concentrate on homework or do computer research.
- Whatever your needs may be, Park View provides you an option to select a flat with dedicated study room and connected washroom.





D-02 | BLOCK A | PARK VIEW

* Artistic impression may differ from actual

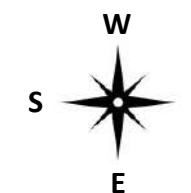
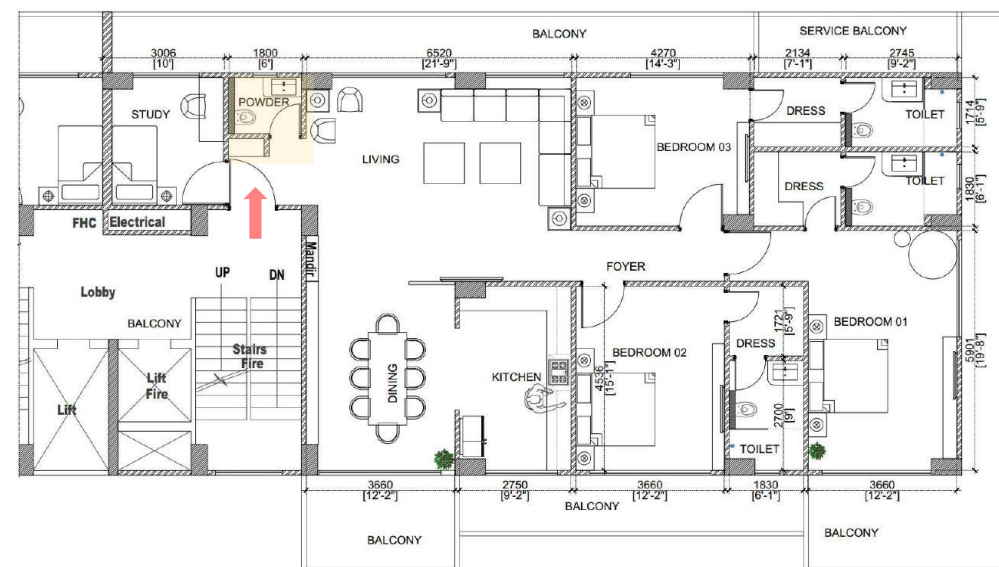


This page is intentionally left blank



POWDER WASHROOM (6' X 4'7")

Behind the closed doors connecting with the living room, there is an attractive bathroom for guests.





SPECIFICATIONS

- Earthquake resistant reinforced concrete structure designed as per IS code.
- Power backup through DG sets (75% of the total load sanctioned for each flat).
- VRV air – conditioner by Daiken or equivalent.
- 3-way Fenesta or equivalent UPVC window.
- Godrej Interio or equivalent modular kitchen.
- Toughened glass in balconies.
- Adequate Security – CCTV surveillance at strategic locations.
- Fire fighting arrangements as per NBC norms.
- All room sizes do not include wall plaster thickness.

AREAS/LOCATION	FLOORS	WALLS	DOORS	CEILING	FIXTURES & FITTINGS
1. Living/Dining Rooms	Flooring / Skirting – High Quality Vitrified Tiles	Base Work with putty & Acrylic Emulsion Paint	Internal Doors of Good Quality veneered Flush Door with Wooden Chaukhats	Base Work with putty & Acrylic Emulsion Paint	Adequate provision of light, fan & power points
2. Bedrooms	Wooden or High Quality Vitrified Tiles as per the interior design	Base Work with putty & Acrylic Emulsion Paint	Internal Doors of Good Quality veneered Flush Door with Wooden Chaukhats	Base Work with putty & Acrylic Emulsion Paint	Adequate provision of light, fan & power points
3. Bathrooms	High Quality Anti Skid Tiles	Tiles up to False Ceiling Level	Internal Doors of Good Quality veneered Flush Door with Wooden Chaukhats	Base Work with putty & Acrylic Emulsion Paint	Vanity Counter – Granite Sanitary – CPVC Water Supply Lines Compatible with pressure pumps. Sanitary Fixtures of Kohler or Roca
4. Modular Kitchen	Flooring / Skirting – High Quality Vitrified Tiles	Tiles between counter & cabinet. Above Cabinet Base Work with putty & Acrylic Emulsion Paint	Internal Doors of Good Quality veneered Flush Door with Wooden Chaukhats	Base Work with putty & Acrylic Emulsion Paint	Godrej Interio or equivalent Modular Kitchen with Granite Top and Chimney
5. Balconies	Flooring / Skirting – High Quality Anti Skid Tiles	Base Work with putty & Exterior Emulsion Paint	Fenesta or equivalent UPVC Sliding Doors	Base Work with putty & Acrylic Emulsion Paint	Toughened Glass parapet with M.S. / SS handrails
6. Elevators lobby & corridors	Flooring / Skirting – Granite	Base Work with putty & Acrylic Emulsion Paint	-	Base Work with putty & Acrylic Emulsion Paint	Adequate provision of light at adequate position
7. Staircase	Flooring / Skirting – Granite	Base Work with putty & Acrylic Emulsion Paint	-	Base Work with putty & Acrylic Emulsion Paint	M.S./S.S. handrails
8. Electrical	Modular switches – Norisys or Legrand make or equivalent Circuit Breaker – from standard makes and brands Electrical Wiring – Copper Wiring in concealed conduits. Adequate provision for light points, fan points, sockets and power points in all rooms. Electrical points for exhaust fans in toilets. VRV air – conditioner by Daiken or equivalent				



DISCLAIMER

The information available in this brochure is subject to change without any notice. While every effort has been made to provide the detail particular contents and other graphics appearance in this brochure as updated, correct, complete and accurate, nevertheless, inadvertent errors may occur in the information. Further, our website(s) and other advertising and publicity material include artist's impression indicating the anticipated impression of appearance of complete development and do not constitute an offer and/or commitment of any nature between us and the recipient. The developer and its directors, authorized agents and employees make no warranties or representations whatsoever regarding the quality, content completeness, suitability, adequacy, sequence, accuracy or timelines of the information and data, including all implied warranties and conditions of merchantability, fitness for any particular purpose, title and non-infringement. In no event The developer and its directors, authorized agent and employees shall be liable for any damage including, without limitation to, direct, incidental or consequential damages or loss arising out of this brochure or with respect to any material contained in this brochure. The developers makes no warranty, express or implied, nor assumes any legal liability or responsibility for the accuracy, correctness, completeness or use of any information contained herein, nor represents that its use would not infringe on privately owned rights. The buyer/customers will be receiving the property "as is", that is, with all defects which may exist, if any, except as otherwise provided in the real estate purchase contract. The buyer/customers are required to make independent verification to his/her satisfaction. This information is intended to provide a general understanding of the subject matter and to help you assess whether you need more detailed information. Developer may change, delete, add to, otherwise amend information contained here as per prevailing government norms without notice. #1sq.mtr. = 10.764 sq. ft. , 1sq. mtr. = 1.19599 sq. yards.

AN EXPERIENCED PROFESSIONAL TEAM



THE DEVELOPER

Vinayak Group has been a trusted developer in Prayagraj. Having executed several projects in the city, Vinayak Group provides the basis for unparalleled quality of construction and timely delivery of projects.



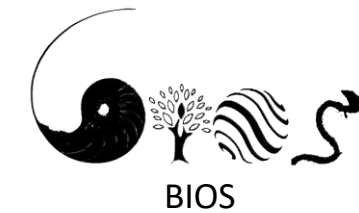
THE ARCHITECT

Shivarpit Katoch Architect has been providing architectural services tailored to the unique environments for their clients. One of the leading firms in India, it works on the principle to strengthen and vitalize our communities.



THE INTERIOR DESIGNER

Pravarsh Designs aspires to create spaces with personalized interiors that enrich the architecture of the space and help clients to enhance their lifestyle. It offers comprehensive services to residential, commercial and institutional clients.



THE LANDSCAPE DESIGNER

At bios : the idea of landscape ranges between nature and culture, the organic and inorganic, between architectural and the horticultural, the natural and the built, the soft and the hard, the curved and the straight.



This page is intentionally left blank



PARK VIEW

VINAYAK ABHAYADATA

THANK YOU
